

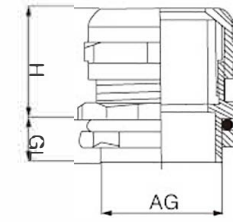
Metal cable gland PG/G/NPT type 金属固定电缆防水接头 PG/G/NPT 型

赛出品质，创新未来

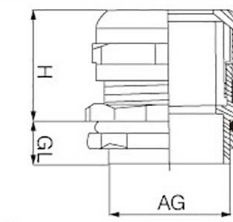


金属固定电缆防水接头 PG/G/NPT 型 Metal cable gland PG/G/NPT type

GUANGZHOU



德制螺纹 PG 系列 PG thread type



管制螺纹 G 型螺纹系列 G thread type



德制螺纹 PG 型系列 PG thread type

产品型号 Model	螺纹规格 Thread specification	适用范围 Range (mm)	螺纹外径 Thread O.D. (mm)	螺纹长度 Thread Length GL (mm)	接合长度 Joint Length H (mm)	扳手尺寸 Spanner Size (mm)
BC-MPG7	PG7	3-6.5	12.5	7	19	14/15
BC-MPG9	PG9	4-8	15.2	8	20	17/18
BC-MPG11	PG11	5-10	18.6	8	21	20/21
BC-MPG13.5	PG13.5	6-12	20.4	8	22	22/23
BC-MPG16	PG16	10-14	22.5	9	23	24/25
BC-MPG19	PG19	12-15	25.0	9	25	24/27
BC-MPG21	PG21	13-18	28.3	9	27	30
BC-MPG25	PG25	15-22	32.0	10	29	35
BC-MPG29	PG29	18-25	37.0	11	31	40
BC-MPG36	PG36	25-33	47.0	11	37	50
BC-MPG42	PG42	32-38	54.0	13	38	57
BC-MPG48	PG48	37-44	59.3	14	38	64
BC-MPG63	PG63	42-52	72.0	16	42	78

管制螺纹 G 型螺纹系列 / 美制螺纹 NPT 型系列 G thread type/NPT thread type

产品型号 Model	螺纹规格 Thread specification	适用范围 Range (mm)	螺纹外径 Thread O.D. (mm)	螺纹长度 Thread Length GL (mm)	接合长度 Joint Length H (mm)	扳手尺寸 Spanner Size (mm)
BC-G1/2	1/2"	6-12	20.9	8	22	22/23
BC-NPT1/2		6-12	21.2	8	22	22/23
BC-G3/4	3/4"	13-18	26.4	9	25	30
BC-NPT3/4		13-18	26.5	9	25	30
BC-G1	1"	18-25	33.2	10	29	40
BC-NPT1		18-25	33.2	10	29	40
BC-G1-1/4	1-1/4"	25-33	41.9	11	35	50
BC-NPT1-1/4		25-33	41.9	11	35	50
BC-G1-1/2	1-1/2"	32-38	47.8	12	37	57/55
BC-NPT1-1/2		32-38	48.0	12	37	57/55
BC-G2	2"	37-44	59.6	14	38	65
BC-NPT2		37-44	60.0	14	38	65
BC-G2-1/2	2-1/2"	42-52	75.1	16	42	77
BC-NPT2-1/2		42-52	72.6	16	42	77
BC-G3	3"	65-70	87.8	18	45	94
BC-NPT3		65-70	88.6	18	45	94